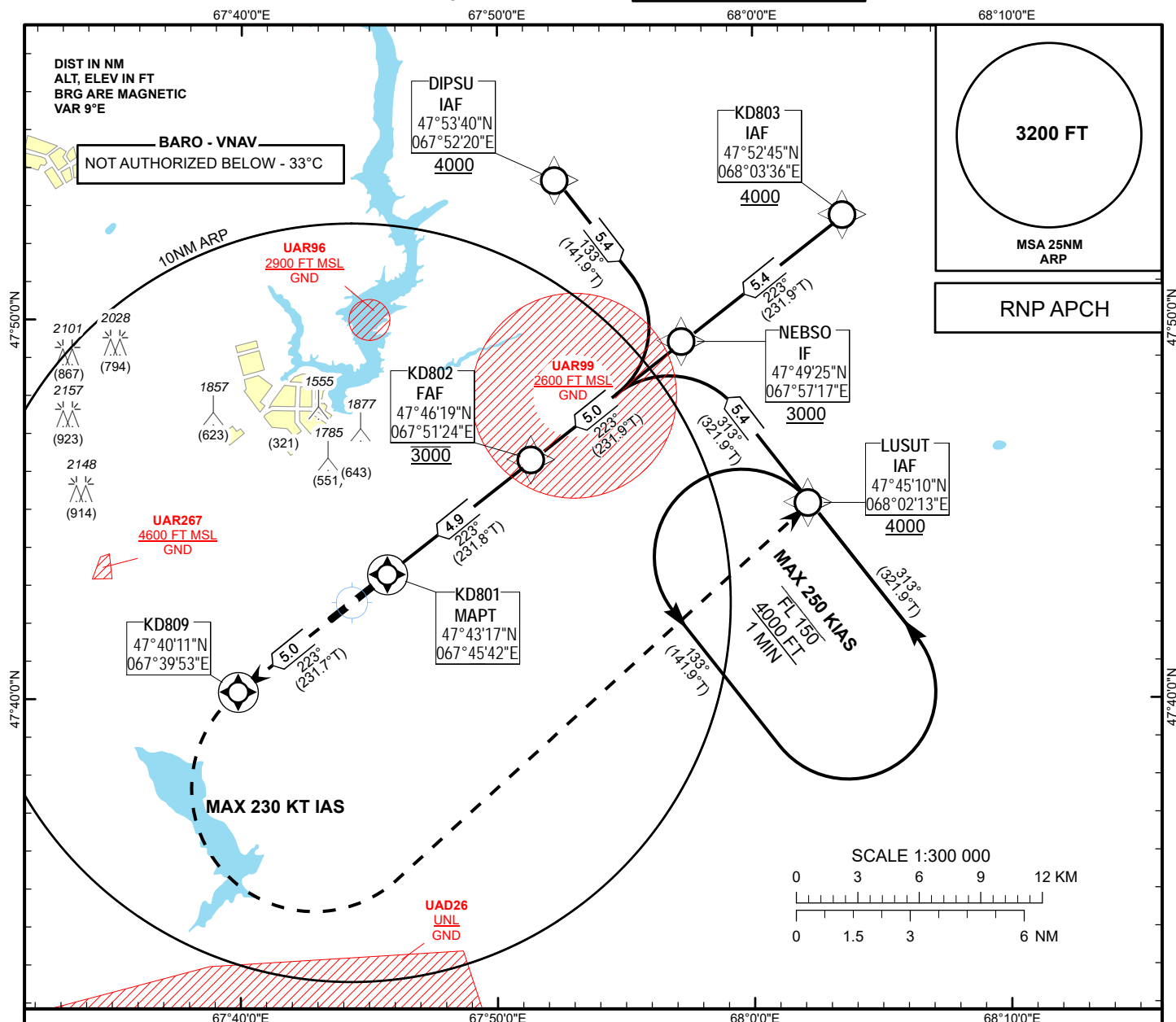


INSTRUMENT
APPROACH
CHART - ICAO

AERODROME ELEV **1251FT**
HEIGHTS RELATED TO
THR RWY 22 - ELEV **1234FT**

ZHEZKAZGAN TOWER 127.1
ZHEZKAZGAN ATIS (EN) 131.4
ZHEZKAZGAN ATIS (RU) 122.4

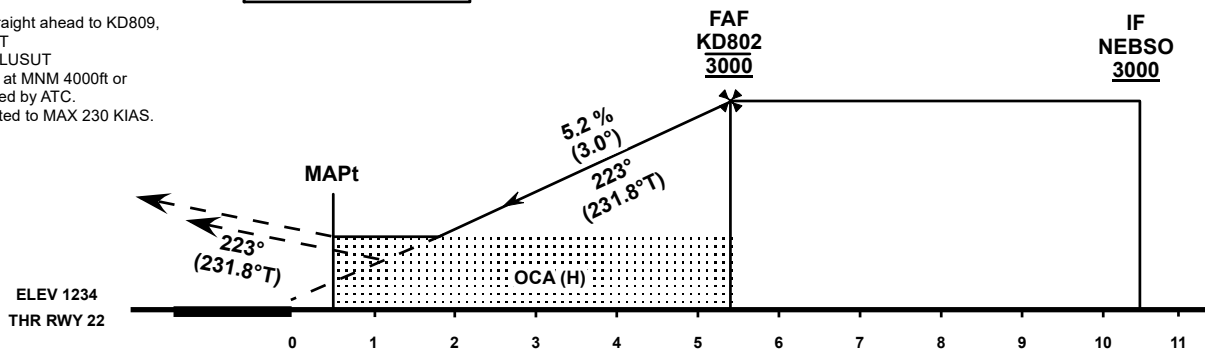
ZHEZKAZGAN
RNP RWY 22



MISSED APPROACH:

TRANSITION ALT 10000 FT

Climb straight ahead to KD809,
turn LEFT
direct to LUSUT
and hold at MNM 4000ft or
as directed by ATC.
Turn limited to MAX 230 KIAS.



OCA(OCH)		A	B	C	D
Straight	LNAV	1500(270)			
	LNAV/VNAV	1425(191)	1435(201)	1456(222)	1483(249)

DIST to KD801	4.9	4	3	2	1
ALTITUDE	3000	2720	2400	2080	1760
HEIGHT	1766	1486	1166	846	526

GS	kt	80	100	120	140	160	180
Rate of descent	ft/min	425	531	637	743	849	955
FAF - MAPt (4.9 NM)	min:s	3:40	2:56	2:27	2:06	1:50	1:38

CHANGE: New chart.

TABULAR DESCRIPTION

RNP RWY22											
Serial Number	Path Descriptor	Waypoint Identifier	Fly - over	Course °M(°T)	Magnetic Variation(°)	Distance (NM)	Turn Direction	Altitude (FT)	Speed (KT)	VPA (°)	Navigation Specification
010	IF	KD803	-	-	+8.8	-	-	+4000	-	-	RNP APCH
020	TF	NEBSO	-	223(231.9)	+8.8	5.4	-	+3000	-	-	RNP APCH
010	IF	DIPSU	-	-	+8.8	-	-	+4000	-	-	RNP APCH
020	TF	NEBSO	-	133(141.9)	+8.8	5.4	-	+3000	-	-	RNP APCH
010	IF	LUSUT	-	-	+8.8	-	-	+4000	-	-	RNP APCH
020	TF	NEBSO	-	313(321.9)	+8.8	5.4	-	+3000	-	-	RNP APCH
010	IF	NEBSO	-	-	+8.8	-	-	+3000	-	-	RNP APCH
020	TF	KD802	-	223(231.9)	+8.8	5.0	-	@3000	-	-	RNP APCH
030	TF	KD801	Y	223(231.8)	+8.8	4.9	-	@1442	-	-3	RNP APCH
040	CF	KD809	Y	223(231.7)	+8.8	5.0	-	-	-	+1.4	RNP APCH
050	DF	LUSUT	-	-	+8.8	-	L	+4000	-230	+1.4	RNP APCH
060	HM	LUSUT	-	313(321.9)	+8.8	-	L	+4000/-FL150	-250	-	RNP APCH

WAYPOINT COORDINATES

RNP RWY22			
Waypoint Identifier		Coordinates	
DIPSU		475340.14N	0675220.19E
KD801		474317.25N	0674542.04E
KD802		474618.76N	0675123.93E
KD803		475245.04N	0680336.06E
KD809		474011.44N	0673953.28E
LUSUT		474510.22N	0680213.37E
NEBSO		474925.29N	0675717.18E